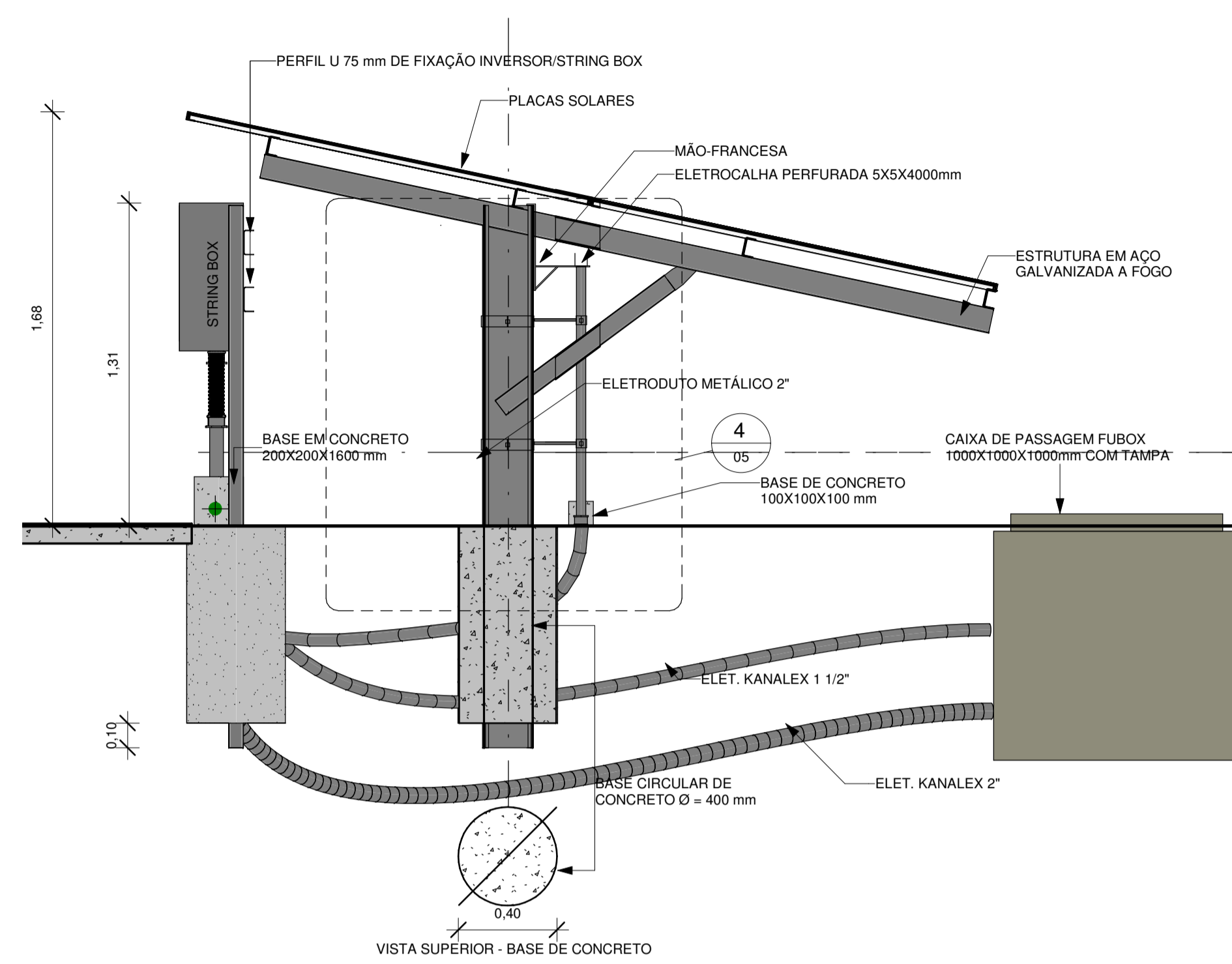
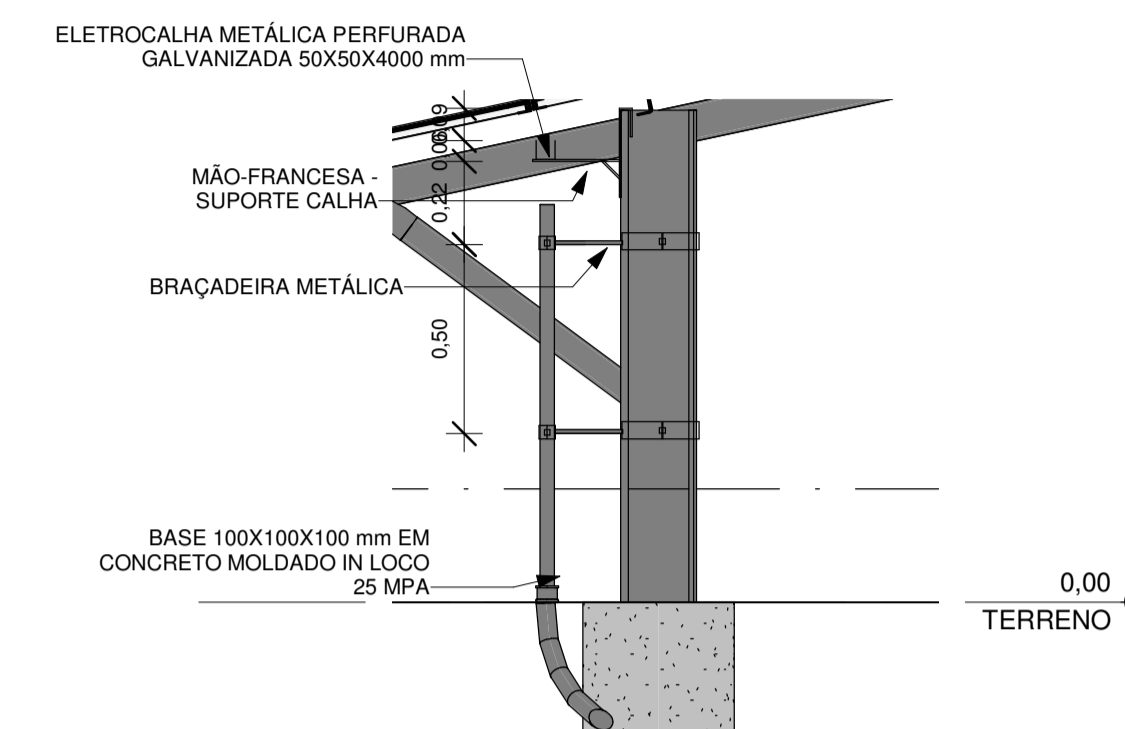


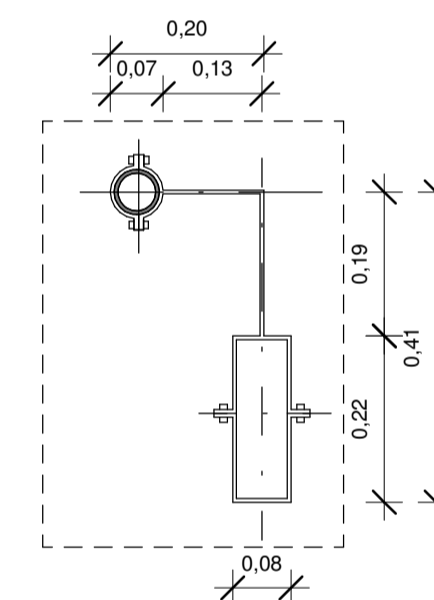
1 PLANTA BAIXA - DETALHAMENTO CONJUNTO INVERSOR
ESCALA 1:20



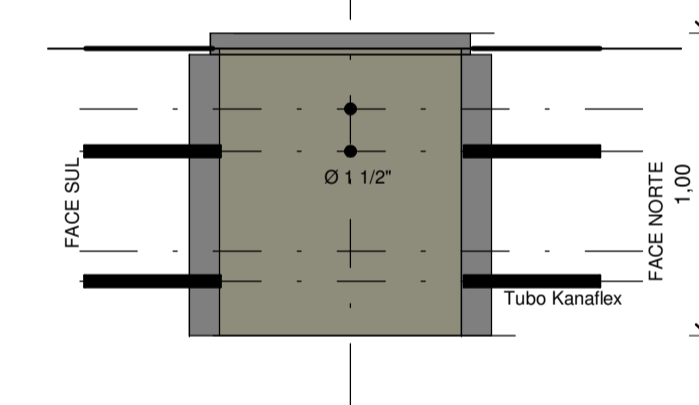
3 CORTE 02 - CONJUNTO INVERSOR
ESCALA 1:20



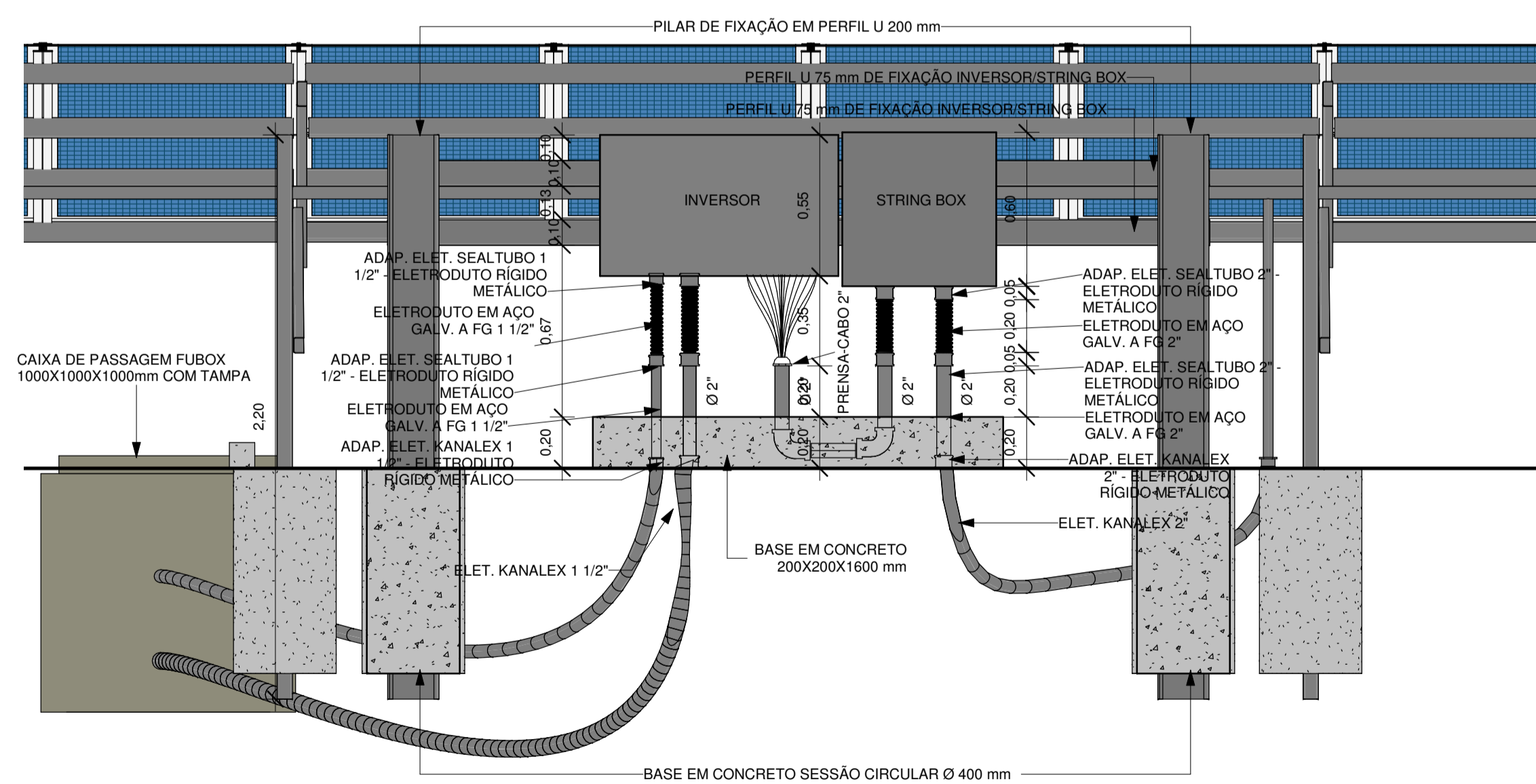
4 CORTE 03 - DETALHE CALHA
ESCALA 1:20



5 DETALHE 01 - BRAÇADEIRA
ESCALA 1:10



6 DETALHE - CAIXA DE PASSAGEM FUBOX
ESCALA 1:25



2 CORTE 01 - CONJUNTO INVERSOR
ESCALA 1:20



PROJETO:
USINA FOTOVOLTAICA 500 KWp

PRANCHA:		DETALHES CONJUNTO DO INVERSOR	
PROPRIETÁRIO:		PREFEITURA SÃO SEBASTIÃO DO PASSÉ	
ENDEREÇO:		São Sebastião do Passé	
FOLHA	DATA:	ESCALA:	RESPONSÁVEL TÉCNICO:
05	19/03/19	Como indicado	ANTONIO TADEU LESSA TIMBÓ CREA/BA 050.560.620-8