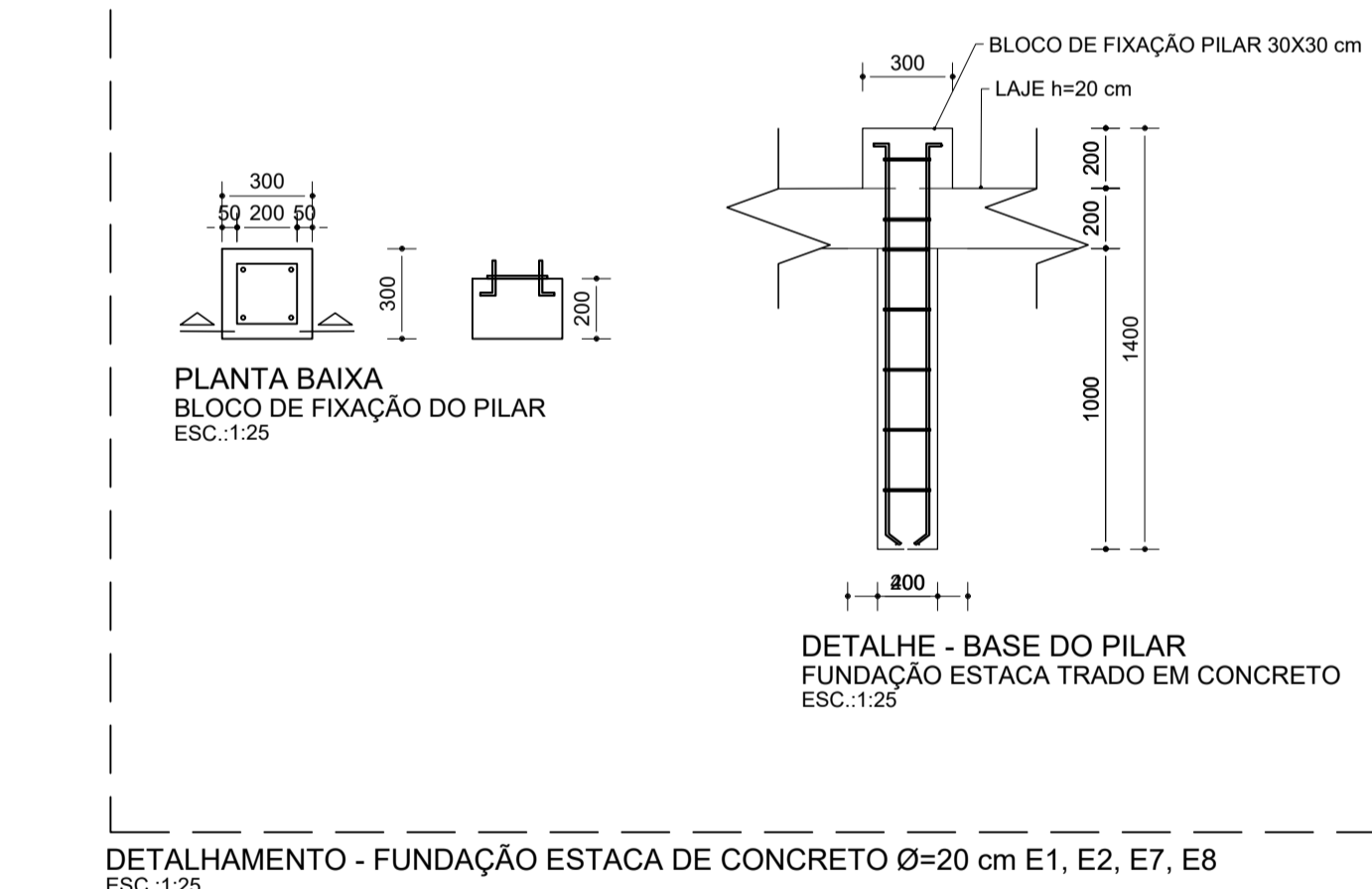
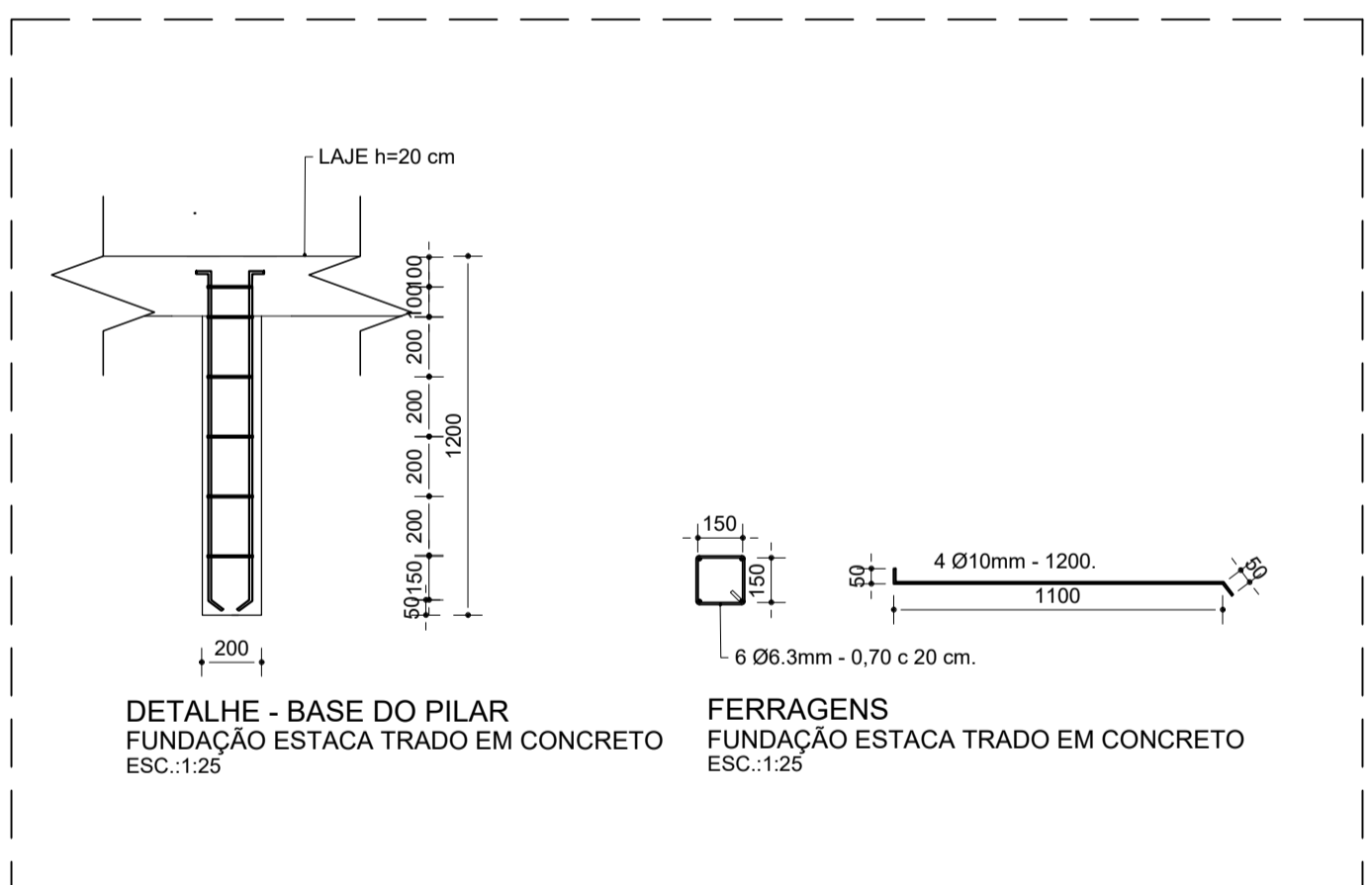


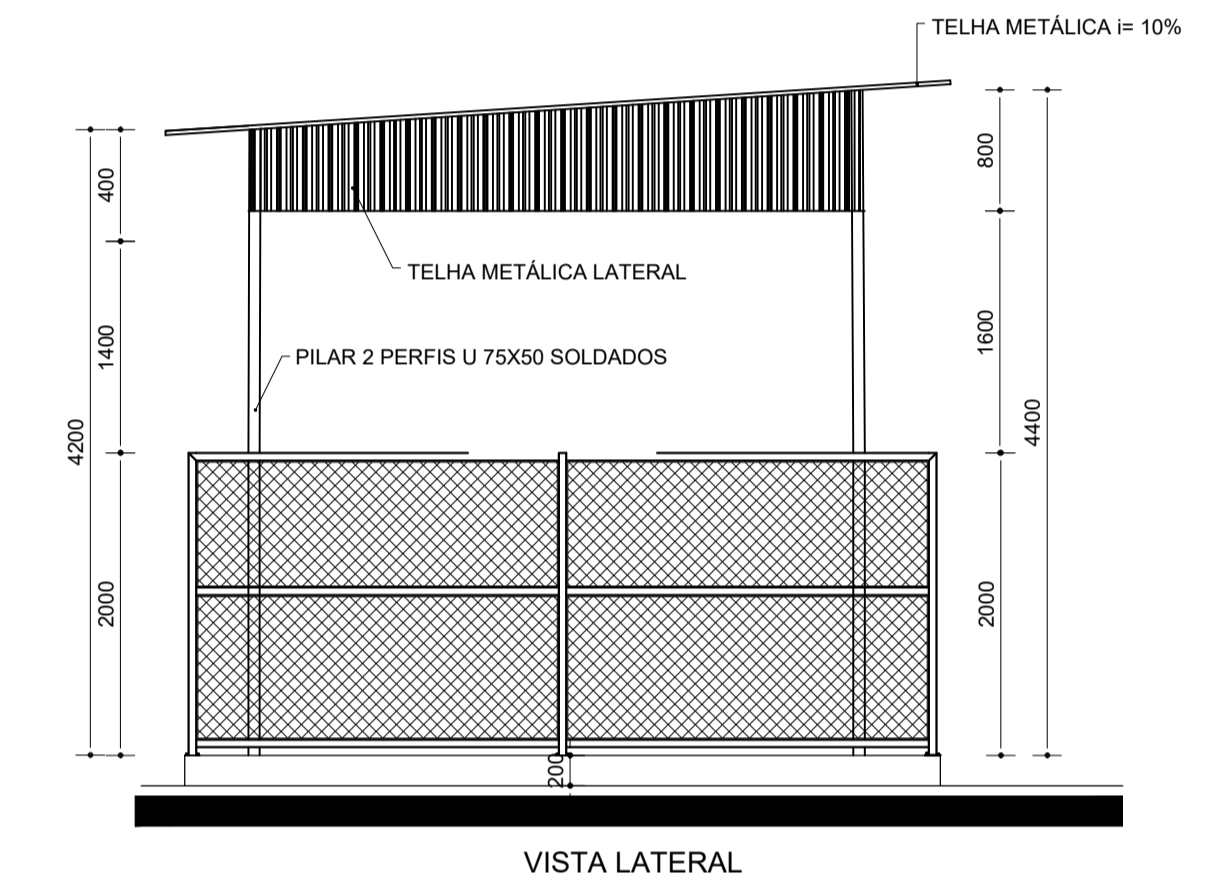
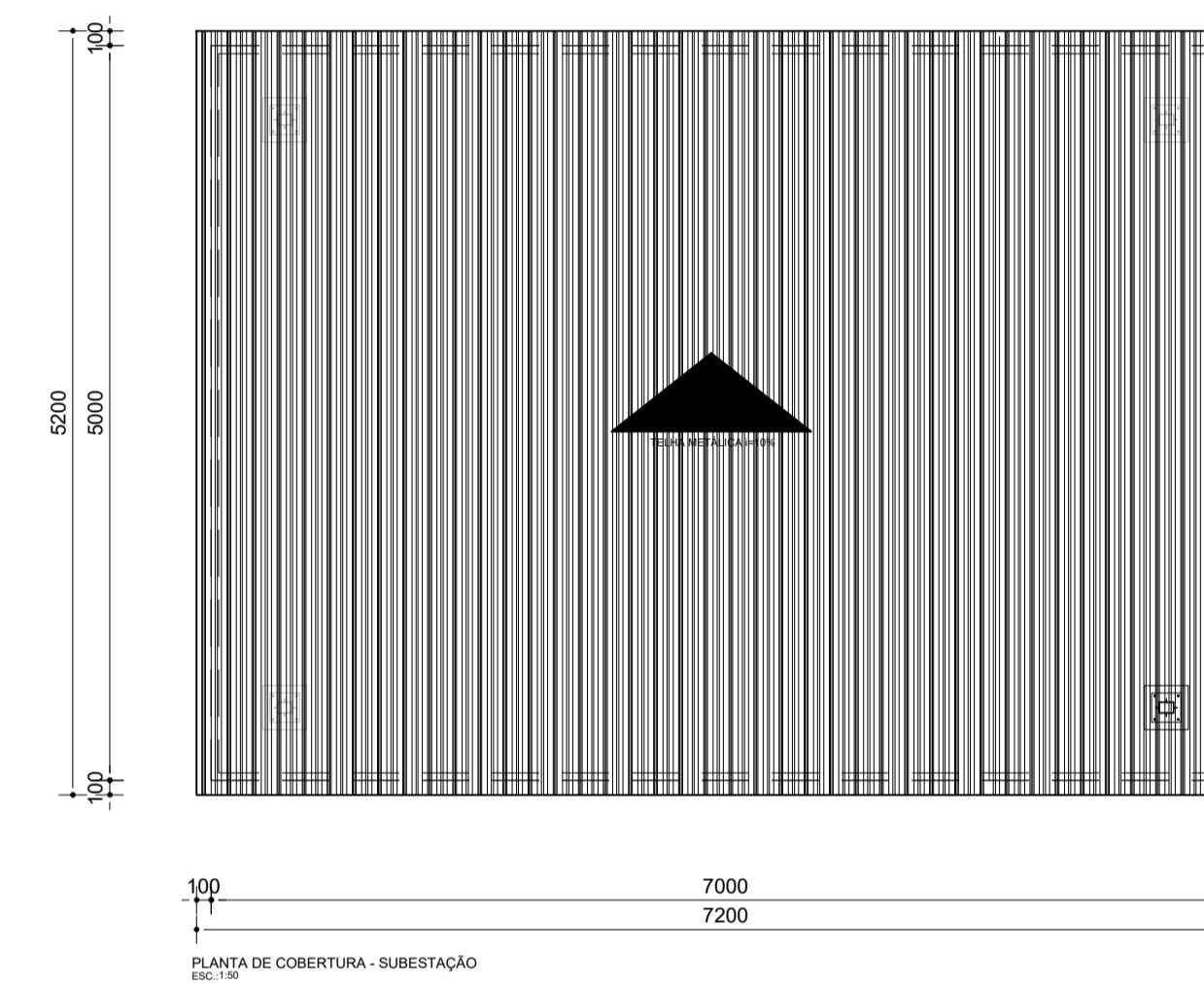
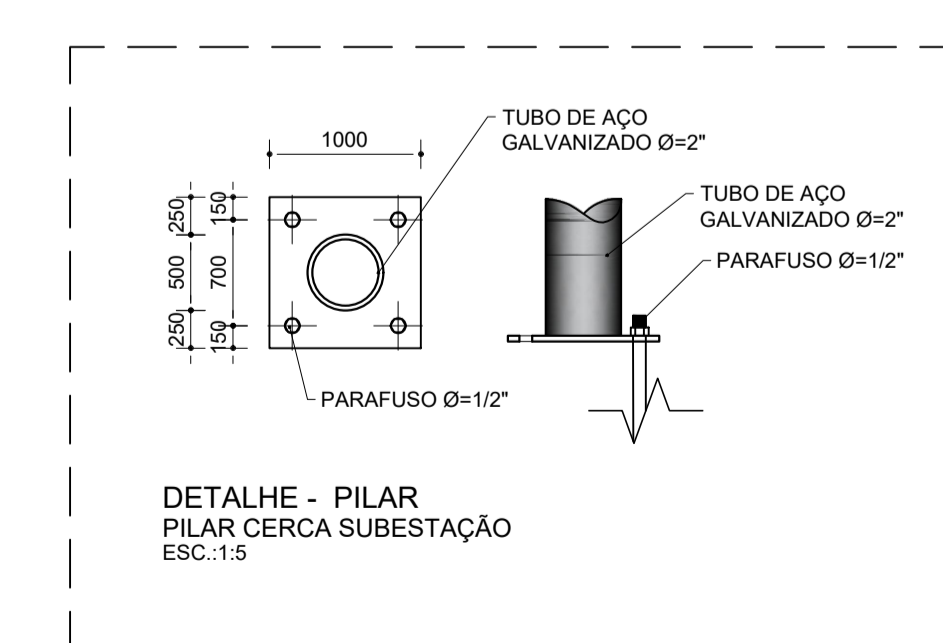
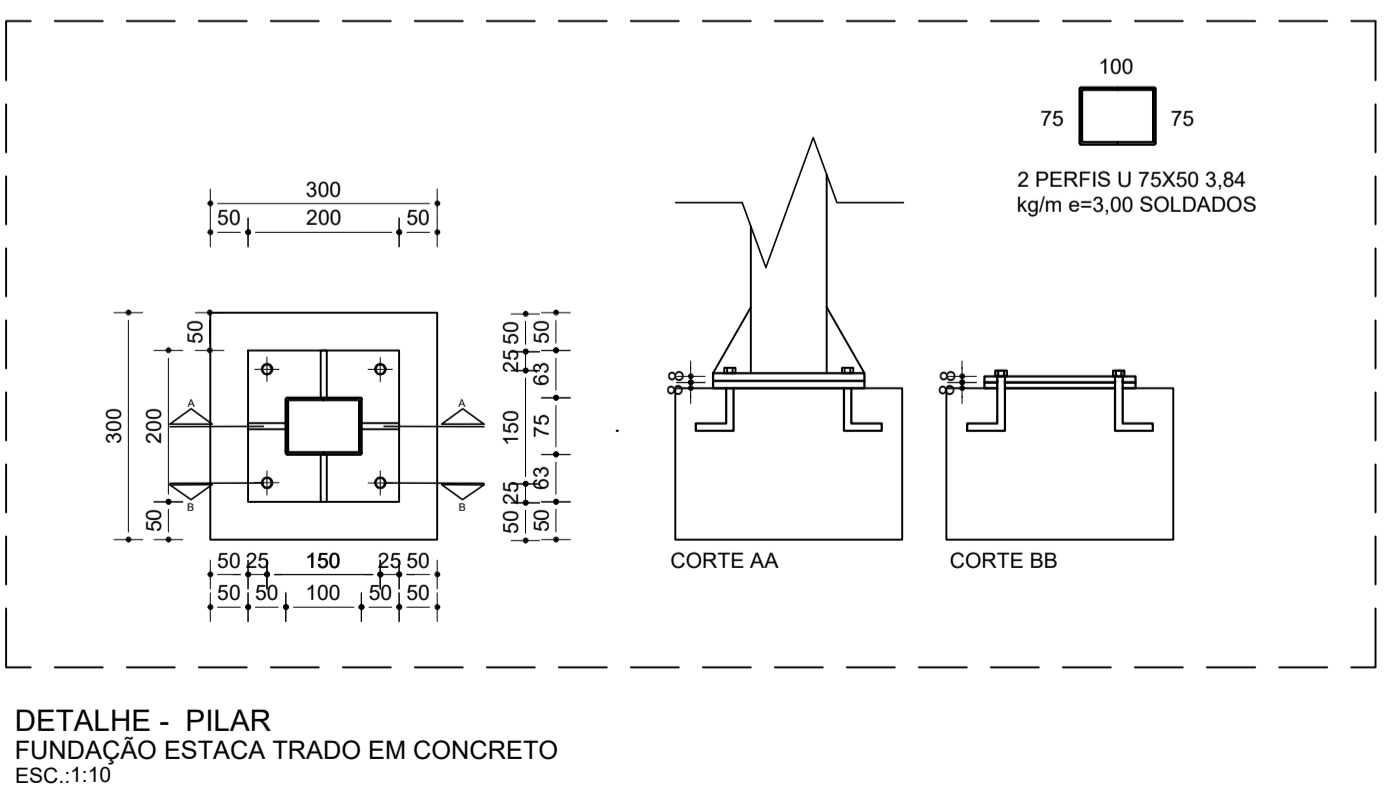
DET. FERRAGENS - FUNDAÇÃO ESTACA DE CONCRETO Ø=20 cm E1, E2, E7, E8  
ESC: 1:25

DETALHAMENTO - FUNDAÇÃO ESTACA DE CONCRETO Ø=20 cm E1, E2, E7, E8  
ESC: 1:25



DET. FERRAGENS - FUNDAÇÃO ESTACA DE CONCRETO Ø=20 cm E3, E4, E5, E6.  
ESC: 1:25

DETALHAMENTO - FUNDAÇÃO ESTACA DE CONCRETO Ø=20 cm E1, E2, E7, E8  
ESC: 1:25



PROJETO:  
USINA FOTOVOLTAICA  
500 KwP

PRANCHA: SUBESTAÇÃO - CIVIL E DETALHES

PROPRIETÁRIO: PREFEITURA MUNICIPAL SÃO SEBASTIÃO DO PASSÉ

ENDEREÇO: SÃO SEBASTIÃO DO PASSÉ, BA

FOLHA	DATA:	ESCALA	RESPONSÁVEL TÉCNICO:
08	18/03/19	1:20	ANTONIO TADEU LESSA TIMBÓ CREA/BA 050.560.620-8